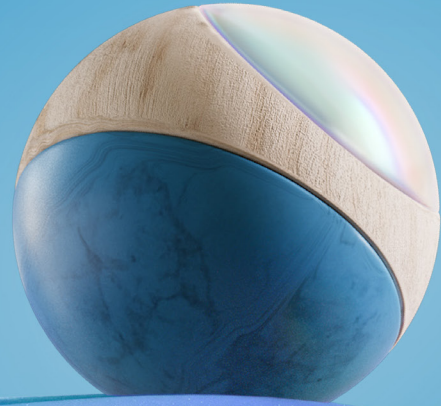




UK Government



Are you receiving **Income-related
Employment and Support Allowance?**

Keep things
smooth
by making the move to
Universal Credit

It won't be automatic, so look out for your letter telling you what you need to do and when. Find support and more information at [gov.uk/ucmove](https://www.gov.uk/ucmove)

Eligibility criteria apply

UC *Universal
Credit*